

# FLOW SIGHT GLASS GAUGE

## FS SERIES

The flow meter sight glass gauge was designed with spring paddle to indicating flow for easy observation of flowing fluid from Left to Right or Right to Left direction.

### Technical Data

**Service:** – Water treatment system – Industrial liquid flow system – Double window indication

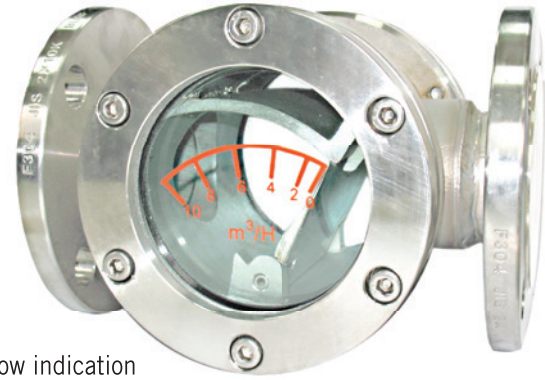
**Material:** Body: SS316; Paddle: SS316; Spring: SS316; Gauge: Tempered glass; Gasket: Teflon or Gore-Tex; Flange: SS316 and SS304 available

**Max. Working Temperature:** 80°C

**Max. Working Pressure:** 10 kg/cm<sup>2</sup> at 25°C water

**Connection Size:** 2"

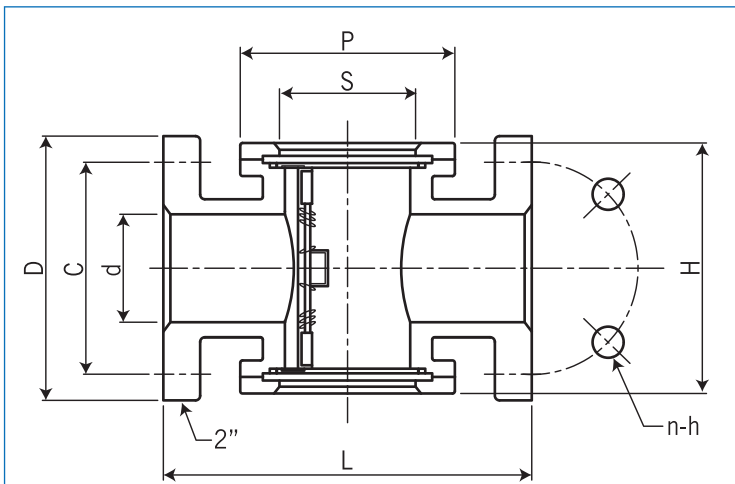
**Connection Rating:** JIS 10K, ANSI 150#, PN10 and PN16 available



**Approvals:**



### Dimensions



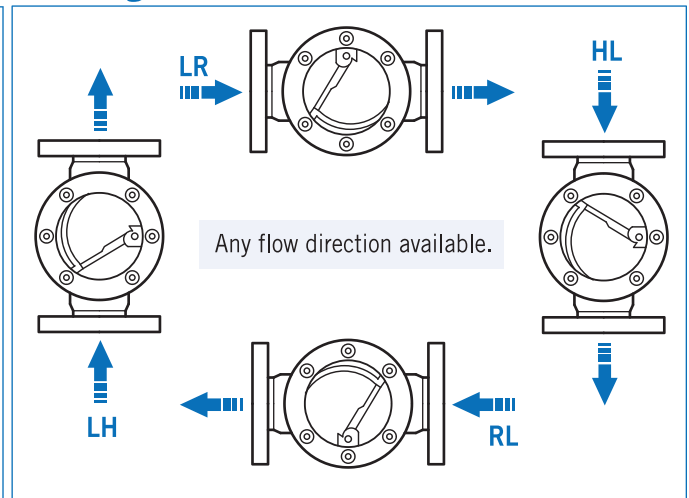
unit=mm

Size	Range (m <sup>3</sup> /h)	Dimensions							
		d	C	D	H	S	P	L	n-h
2"	2~10	48	120	155	170	102	149.5	220	19φ
	2~18	48	120	155	170	102	149.5	220	19φ

**NOTE**

1. Flange rating: JIS 10K, ANSI 150#, PN10 and PN16 are available.
2. The Dimensions of C, D will be changed by flange rating.

### Mounting Position



### Ordering Information

FS	Code	Body Material		
	1	SS316 (standard)		
	Code	Connection Size		
	1	2"		
	Code	Flange Rating		
		(1) JIS 10K (2) ANSI 150# (3) PN10 (4) PN16		
	Code	Flange Material		
	1	SS316		
	2	SS304		
	Code	Flow Range		
	A	2~10 M <sup>3</sup> /H		
	B	2~18 M <sup>3</sup> /H		
	Code	Flow Direction		
	LH	HL	RL	LR
	Code	CE 1128 Mark Request		
		(1) With label sticker (2) With S.S nameplate (3) Stamp (4) Without		

FS [ ] [ ] [ ] [ ] [ ] [ ] [ ] [ ] [ ] [ ] Complete Ordering Code